

All scales should be performed at a brisk and steady tempo

Region 23 Band Division
Major Scales

Piccolo

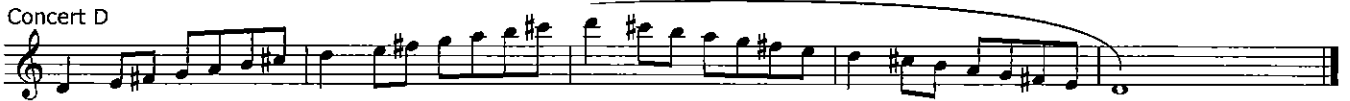
Concert C



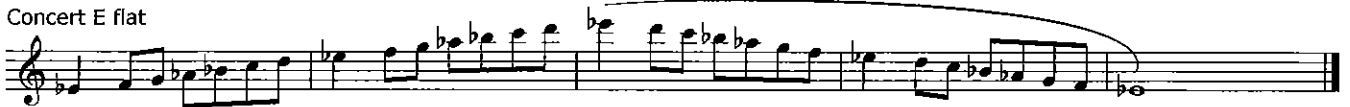
Concert D flat



Concert D



Concert E flat



Concert E



Concert F



Concert G flat



Concert G



Concert A flat



Concert A



Concert B flat



Concert B



Chromatic: written low D to high C
play full range - all tongued or all slurred at student discretion



Region 23 Band Division

Major Scales

Flute

All scales should be performed at a brisk and steady tempo

Concert C



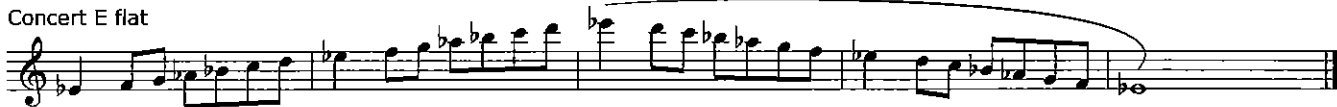
Concert D flat



Concert D



Concert E flat



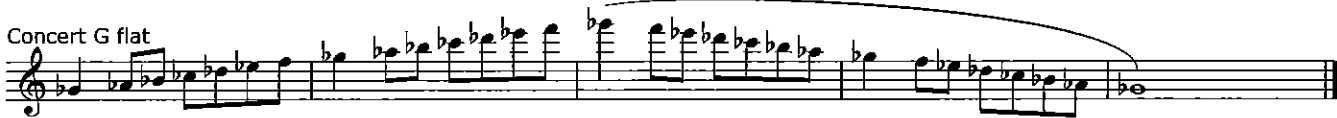
Concert E



Concert F



Concert G flat



Concert G



Concert A flat



Concert A



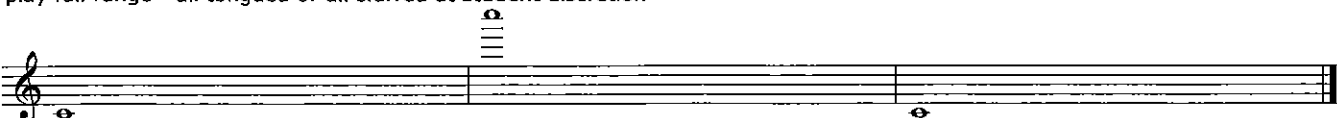
Concert B flat



Concert B



Chromatic: written low C to high C
play full range - all tongued or all slurred at student discretion



Region 23 Band Division

Major Scales

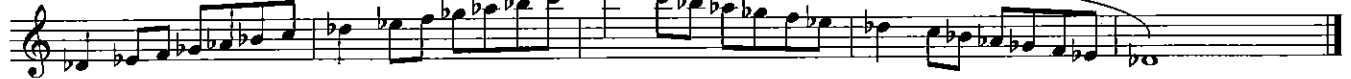
Oboe

All scales should be performed at a brisk and steady tempo

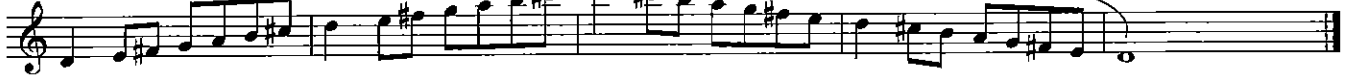
Concert C



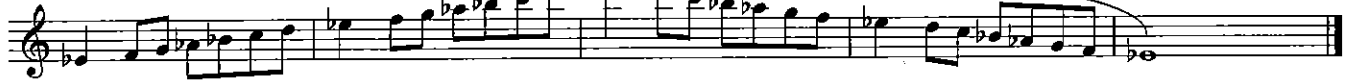
Concert D flat



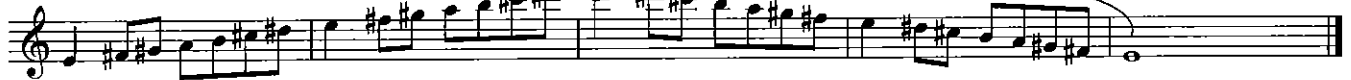
Concert D



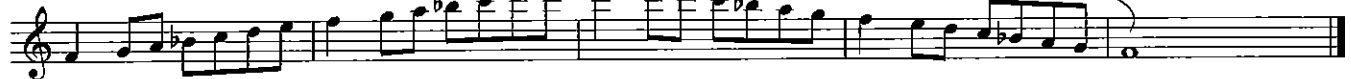
Concert E flat



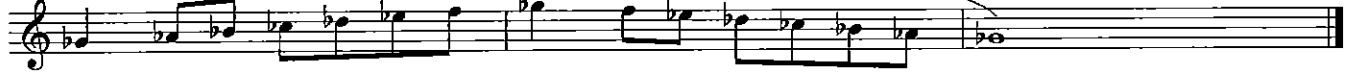
Concert E



Concert F



Concert G flat



Concert G



Concert A flat



Concert A



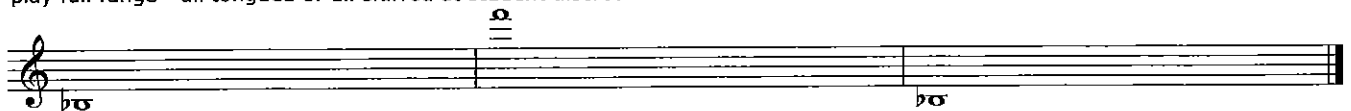
Concert B flat



Concert B



Chromatic: written low B flat to high F
play full range - all tongued or all slurred at student discretion

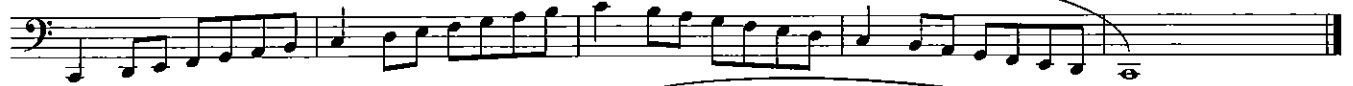


Region 23 Band Division
Major Scales

All scales should be performed at a brisk and steady tempo

Bassoon

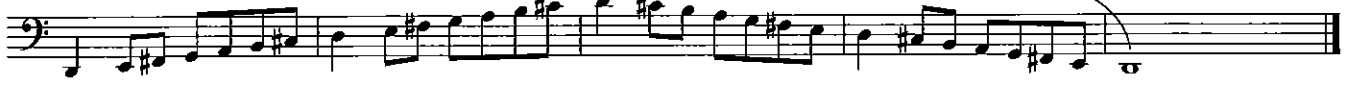
Concert C



Concert D flat



Concert D



Concert E flat



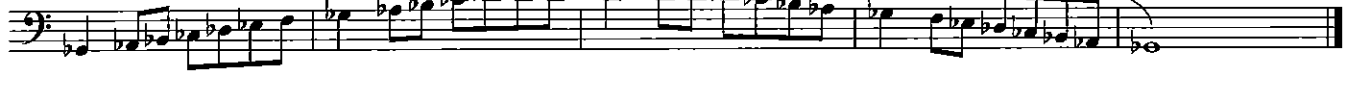
Concert E



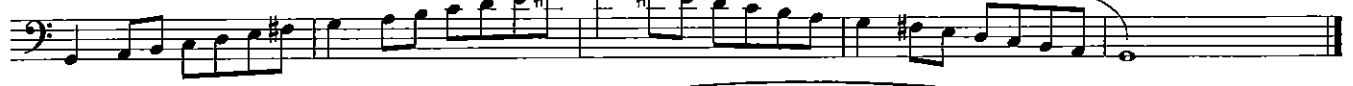
Concert F



Concert G flat



Concert G



Concert A flat



Concert A



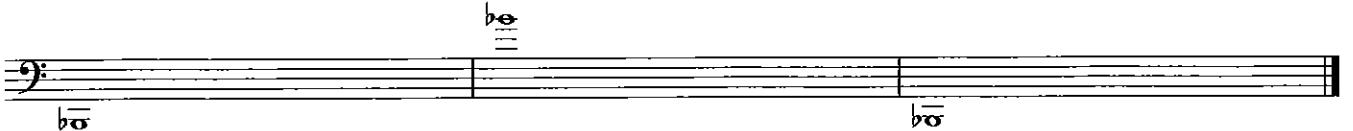
Concert B flat



Concert B



Chromatic: written low B flat to high B flat
play full range - all tongued or all slurred at student discretion



Region 23 Band Division
Major Scales

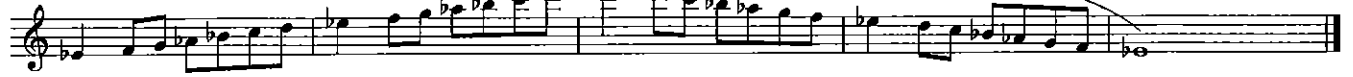
All scales should be performed at a brisk and steady tempo

B Flat Clarinet

Concert C



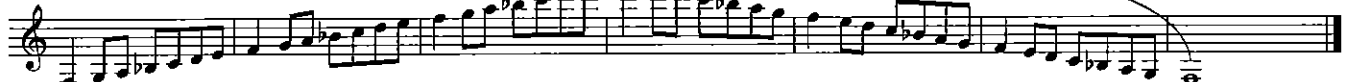
Concert D flat



Concert D



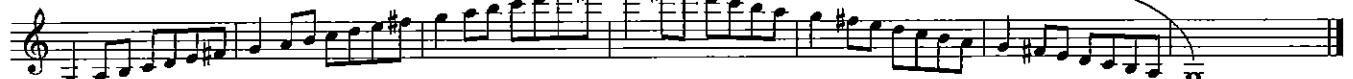
Concert E flat



Concert E



Concert F



Concert G flat



Concert G



Concert A flat



Concert A



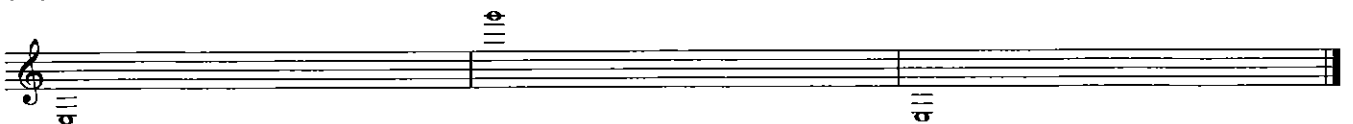
Concert B flat



Concert B



Chromatic: written low E to high G
play full range - all tongued or all slurred at student discretion



Region 23 Band Division

Major Scales

B Flat Bass & Contra Clarinet

All scales should be performed at a brisk and steady tempo

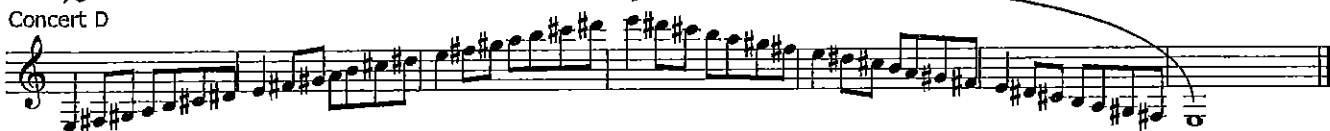
Concert C



Concert D flat



Concert D



Concert E flat



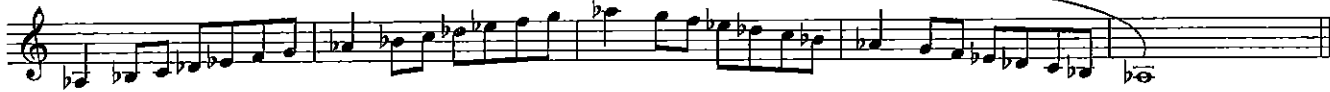
Concert E



Concert F



Concert G flat



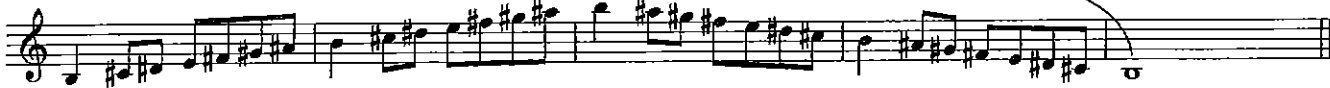
Concert G



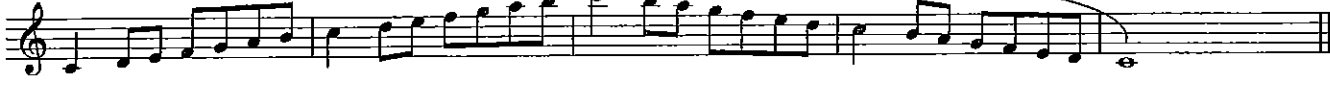
Concert A flat



Concert A



Concert B flat



Concert B



Chromatic: written low E flat to high E
play full range - all tongued or all slurred at student discretion



Region 23 Band Division
Major Scales

All scales should be performed at a brisk and steady tempo

E Flat Saxophone

Concert C



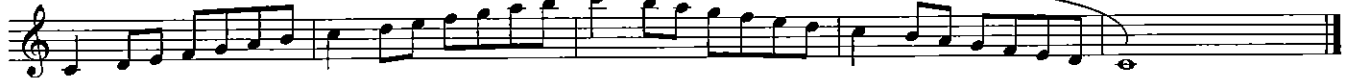
Concert D flat



Concert D



Concert E flat



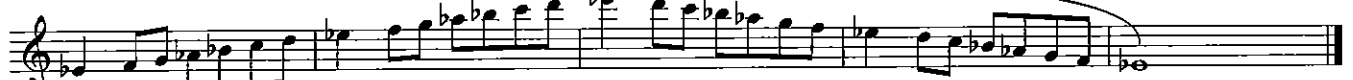
Concert E



Concert F



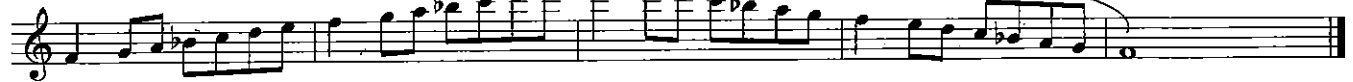
Concert G flat



Concert G



Concert A flat



Concert A



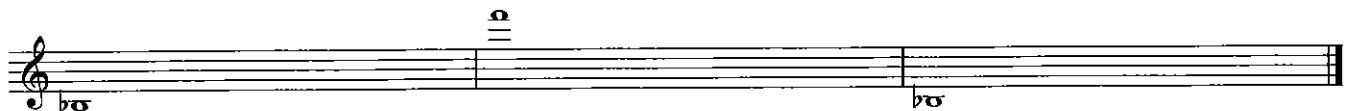
Concert B flat



Concert B (Cb)



Chromatic: written low B flat to high F
play full range - all tongued or all slurred at student discretion



Region 23 Band Division

Major Scales

Tenor Saxophone

All scales should be performed at a brisk and steady tempo

Concert C



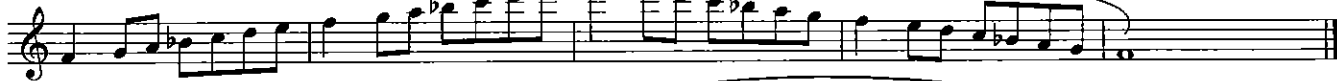
Concert D flat



Concert D



Concert E flat



Concert E



Concert F



Concert G flat



Concert G



Concert A flat



Concert A



Concert B flat



Concert B



Chromatic: written low A sharp to high D
play full range - all tongued or all slurred at student discretion



Region 23 Band Division
Major Scales

All scales should be performed at a brisk and steady tempo

Bb Cornet/Trumpet

Concert C



Concert D flat



Concert D



Concert E flat



Concert E



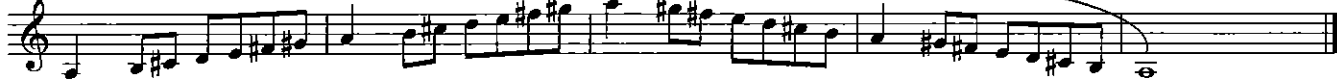
Concert F



Concert G flat



Concert G



Concert A flat



Concert A



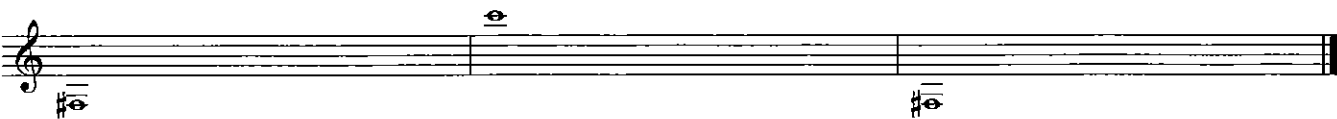
Concert B flat



Concert B



Chromatic: written low F sharp to high C
play full range - all tongued or all slurred at student discretion



Region 23 Band Division

Major Scales

F Horn

All scales should be performed at a brisk and steady tempo

Concert C



Concert D flat



Concert D



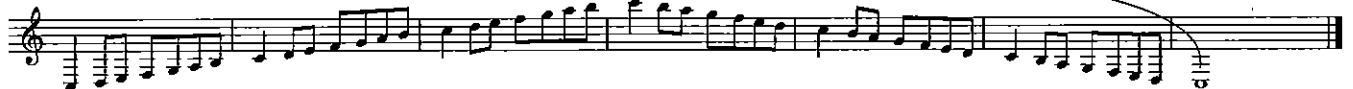
Concert E flat



Concert E



Concert F



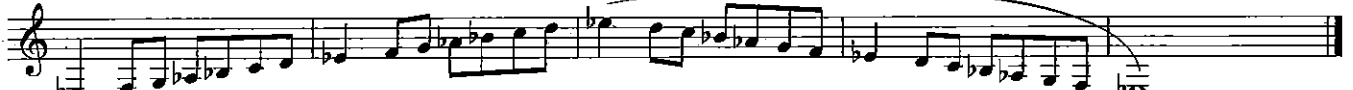
Concert G flat



Concert G



Concert A flat



Concert A



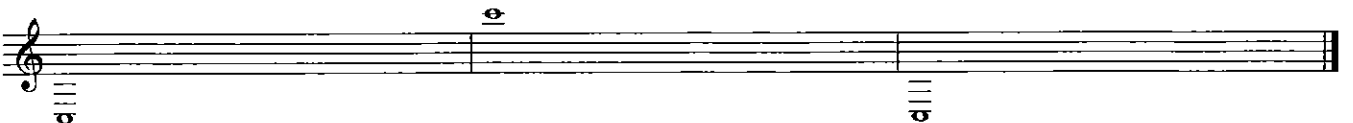
Concert B flat



Concert B



Chromatic: written low C to high C
play full range - all tongued or all slurred at student discretion



Region 23 Band Division
Major Scales

All scales should be performed at a brisk and steady tempo

Tenor Trombone

Concert C



Concert D flat



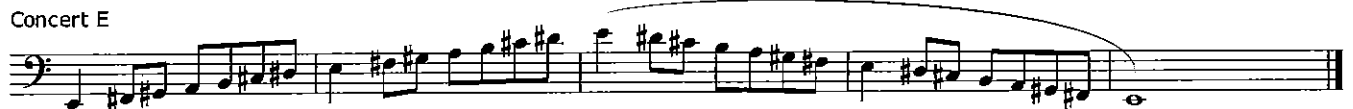
Concert D



Concert E flat



Concert E



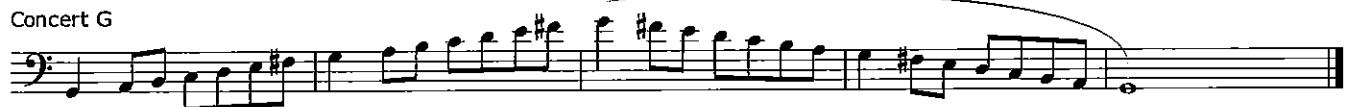
Concert F



Concert G flat



Concert G



Concert A flat



Concert A



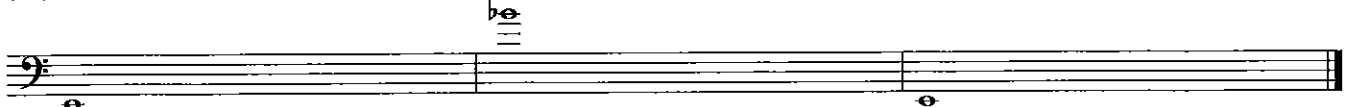
Concert B flat



Concert B



Chromatic: written low E to high B flat
play full range - all tongued or all slurred at student discretion



Region 23 Band Division
Major Scales

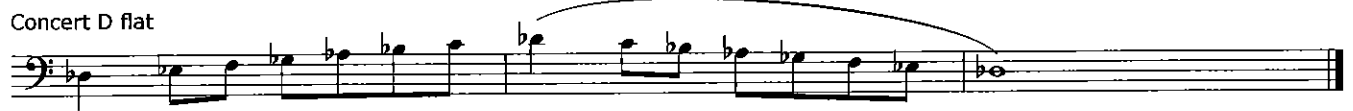
All scales should be performed at a brisk and steady tempo

Euphonium

Concert C



Concert D flat



Concert D



Concert E flat



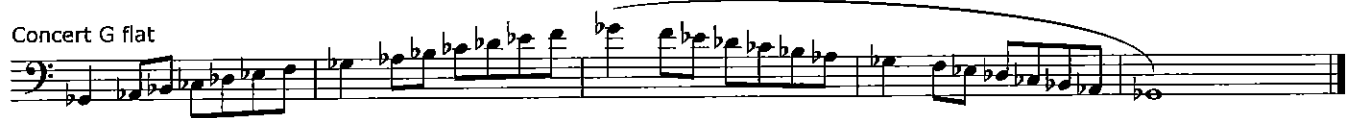
Concert E



Concert F



Concert G flat



Concert G



Concert A flat



Concert A



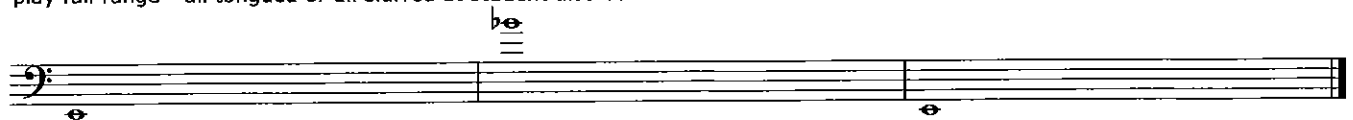
Concert B flat



Concert B



Chromatic: written low E to high B flat
play full range - all tongued or all slurred at student discretion



Region 23 Band Division

Major Scales

Tuba

All scales should be performed at a brisk and steady tempo

Concert C



Concert D flat



Concert D



Concert E flat



Concert E



Concert F



Concert G flat



Concert G



Concert A flat



Concert A



Concert B flat



Concert B



Chromatic: written low E to high B flat
play full range - all tongued or all slurred at student discretion

