

CRHS Cougar Band Uniform Guidelines



8.1 Marching Uniform Guidelines

All students are assigned both a marching uniform and concert attire that is the property of Katy Independent School District. Students are expected to follow the listed uniform guidelines. No variations will be allowed.

RESPONSIBILITIES

- 1. The issued marching uniform includes a black marching jacket, a jacket hanger, black bibber pants, a pair of black gauntlets, and a hat.
- 2. Each school year (usually during Round-Up, summer band, or on “Money Day”) students will be fitted for uniform parts.
- 3. The jackets and bibbers are stored in the uniform closet in the band hall throughout the year. The hats and gauntlets are stored in hat boxes in the the hat cases in the Fine Arts hallway.
- 4. If a student damages or loses any part of the uniform, the student is responsible and will pay the cost of repair or replacement of the article.
- 5. In addition to the issued uniform pieces, each student is expected to provide a band moisture manage t-shirt, a “show” t-shirt, a polo shirt, black marching shoes, black socks, black gloves, a garment bag, a rain poncho, luggage tags, and a tote. To insure complete uniformity, these items are sold through the band booster organization from a specific supplier. All students are expected to purchase these items on “Money Day” at the beginning of the school year. Students are also required to have light weight athletic-type shorts which one can purchase on your own.

CHECK-OUT / CHECK-IN PROCEDURES

- 1. The assigned parts of the uniform will be checked-out to each student before each performance at a specific time designated by the band director. **Be on time!**
- 2. Students who arrive for check-out without their personal uniform parts (i.e. shoes or socks) run the risk of not being able to participate. In some cases, students may borrow items from the uniform closet. Borrowers will be reported to the band director and points will be deducted from their daily grade. Borrowed items must be returned directly following each performance. (Availability of spare items is not guaranteed. SOCKS, GLOVES AND SHOW SHIRTS ARE NOT AVAILABLE TO BORROW. A limited number of gloves and show shirts will be kept in the uniform room for students to purchase in case they lose theirs.)
- 3. The uniforms will be checked-in immediately after each performance upon return to the band hall. Only properly hung uniforms will be accepted at check-in.
- 4. Students who fail to follow the appropriate check-out / check-in procedures will be dealt with by the band director.

8.1 Marching Uniform Guidelines

(continued)

CLEANING

- 1. The uniforms will be professionally dry-cleaned through out the year as determined by the band director and uniform chairman.
- 2. Each student is required to pay a “uniform cleaning fee” on “Money Day” at the beginning of each year to cover this cost.
- 3. Under NO circumstances should a student ever take one’s uniform to the cleaners without expressed permission from the band director or uniform chairman.

DONNING THE UNIFORM

- 1. Always wear and treat your uniform with pride.
- 2. The uniform should be worn as a complete unit at all times when in public. The only exception to this will be when a director instructs students to remove hat and/or jacket.
- 3. The following checklist should be used when preparing for a performance:
 - garment bag
 - tote bag
 - black socks
 - black marching shoes
 - light weight shorts (which are worn underneath bibbers)
 - black bibber pants
 - Cougar band t-shirt (gray moisture manage t-shirt) (which is worn underneath bibbers)
 - black jacket on hanger
 - hat
 - gauntlets
 - black gloves
 - rain poncho
- 4. Hair is to be worn up and under the hat if hair is below the collar whether male or female.
- Students can use hair-colored pins, clips, rubber bands, etc...but no ribbons unless they are black. Natural hair colors will be the only style of color accepted.
- 5. No jewelry including watches, earrings, necklaces, etc... is allowed.
- 6. No make-up or fingernail polish is allowed.

8.1a Pant Length



Pants are Too High:

- All shoelace holes and/or socks can be seen
- Straps will require adjustment for proper fit



Pants are Too Low:

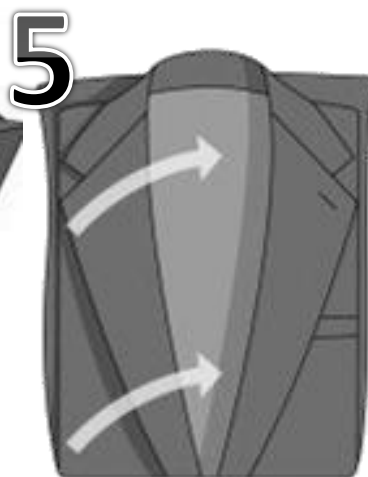
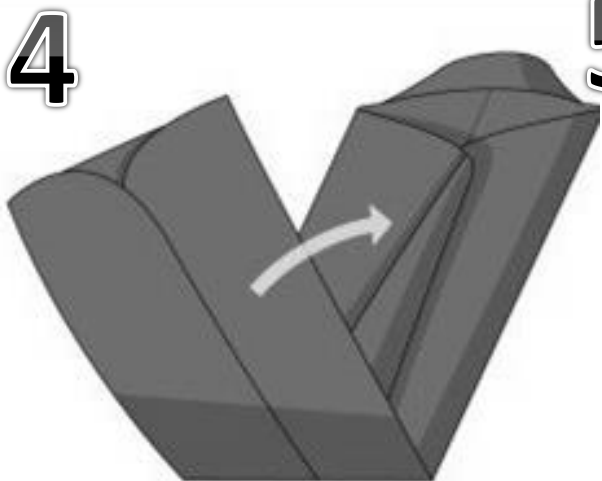
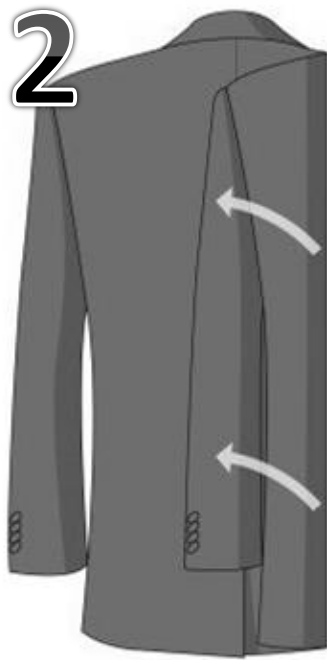
- Cover all shoelace holes
- Have bends and creases folding on the way down
- Cover the heel of the shoe
 - Look baggy



Pants are Fitted Perfectly:

- Align with the shoelaces
- No visible breaks/folds/drapes in pants when standing up straight

8.1b How to Fold Jacket and Place Hat during Warm Ups



8.1. How to Properly Style Hair for Uniform



Incorrect: Bun should not be viewable if hat is placed on head properly. It cannot be below the back of the hat, or resting on the heck. It should be directly on top of head.

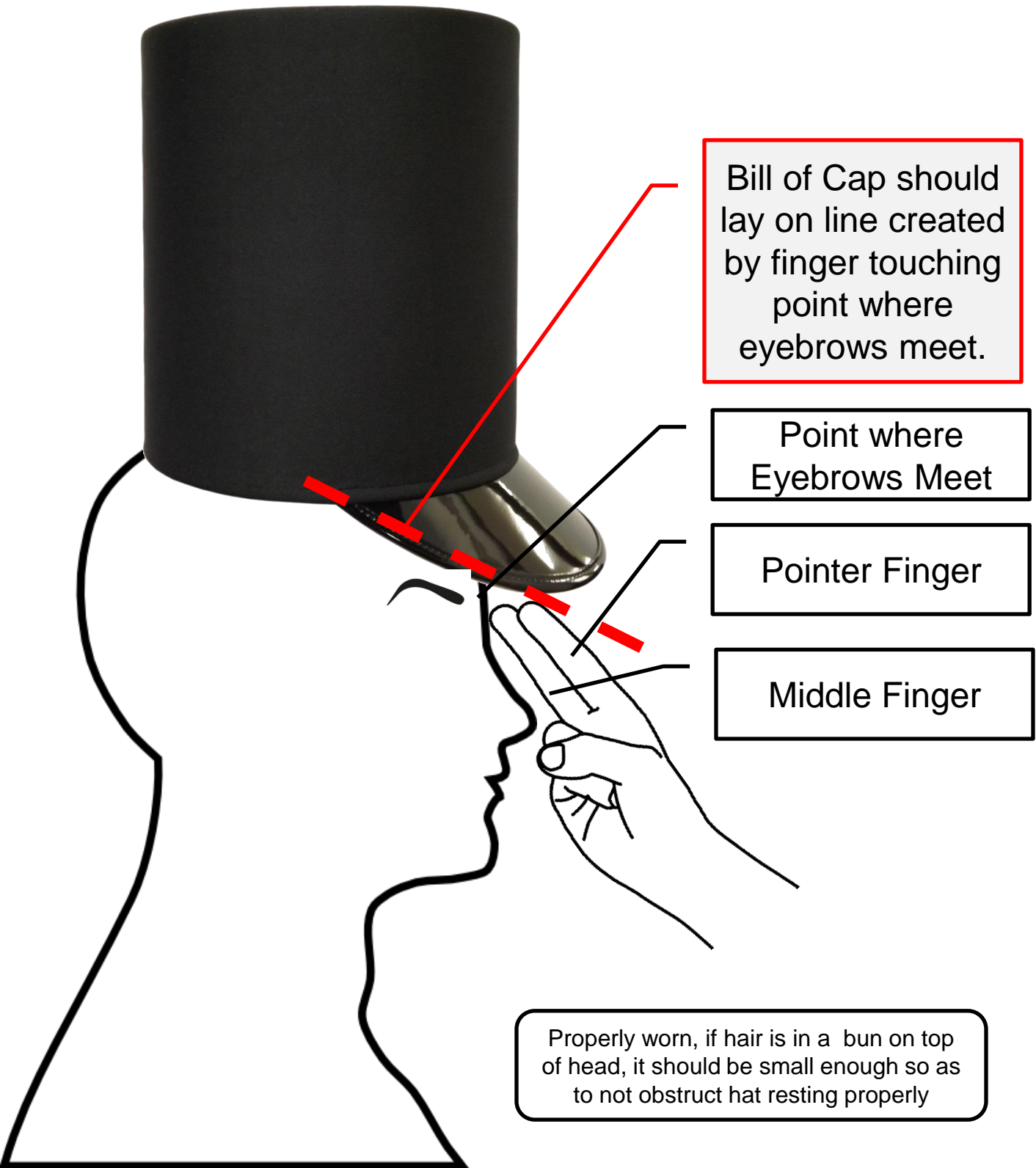


Incorrect: All stray hairs should be pinned with bobby pins or kept with hairspray. No tendrils should be able to be seen.



Correct: Properly worn bun on top of head, not too large to obstruct hat resting properly (see next page), no stray hairs.

8.1d Band Hat Fitting



8.2 Casual Uniform Guidelines

- When stipulated by the band director, students may wear casual attire. The casual uniform consists of the following:
 - polo shirt or “show” t-shirt (determined by band director)
 - shirt must be tucked in
 - denim shorts, capris or blue jeans (determined by band director)
 - black socks and black marching shoes OR tennis shoes when appropriate and approved by band director.

8.3 Concert Attire

Guidelines for Male Students

RESPONSIBILITIES

- 1. The issued male attire includes a black tuxedo coat and pant, tuxedo hanger, black cummerbund, and black bowtie.
- 2. In the autumn each student will be fitted for their concert attire.
- 3. The tuxedos are stored in the uniform closet in the band hall throughout the year.
- 4. If a student damages or loses any part of the uniform, including the hanger, the student is responsible and will pay the cost of repair or replacement of the article.
- 5. In addition to the issued attire, each student is expected to provide the additional required accoutrements of a white tuxedo shirt (1/4" pleats) of good quality, black socks and black shoes. A male student may wear his black marching shoes if they are polished and in good condition.

CHECK-OUT / CHECK-IN PROCEDURES

- 1. The tuxedos will be checked-out to each student before each performance at a specific time designated by the band director. **Be on time!**
- 2. Students who arrive without other necessary uniform parts (i.e. shoes or socks) may borrow from the uniform closet. Borrowers will be reported to the band director and points will be deducted from their daily grade. Borrowed items must be returned directly following each performance. Note: Availability of spare items is not guaranteed. Those unable to borrow may not be able to participate.
- 3. The tuxedos will be checked-in immediately after each performance upon return to the band hall OR at a designated time set by the band director/uniform chairman. Only properly hung tuxedos will be accepted at check-in.
- 4. Students who fail to follow the appropriate check-out / check-in procedures will be dealt with by the band director.

CLEANING

- 1. The tuxedos will be professionally dry-cleaned through out the year as determined by the band director and uniform chairman.
- 2. Each student is required to pay a "uniform cleaning fee" on "Money Day" at the beginning of each year to cover this cost.
- 3. Under NO circumstances should a student ever take one's tuxedo to the cleaners.

DONNING THE TUXEDO

- 1. Always wear and treat your tuxedo with pride.
- 2. The tuxedo should be worn as a complete unit at all times when in public. The only exception to this will be when a director instructs students to remove the coat due to heat or unloading/loading instruments.
- 3. The following checklist should be used when preparing for a performance:
 - garment bag, if necessary
 - black socks
 - black formal shoes
 - white tuxedo shirt
 - cummerbund
 - bowtie
 - black tuxedo on hanger
- 4. No jewelry including watches, earrings, necklaces, etc... is allowed.

8.4 Concert Attire

Guidelines for Female Students

RESPONSIBILITIES

- 1. The issued female attire is a black formal dress and hanger.
- 2. In the autumn each student will be fitted for their concert attire.
- 3. The dresses are stored in the uniform closet in the band hall throughout the year.
- 4. If a student damages or loses any part of the uniform, including the hanger, the student is responsible and will pay the cost of repair or replacement of the article.
- 5. In addition to the issued attire, each female student is expected to provide the additional required accoutrements of black, formal, closed-toe shoes with heel not to exceed 2", black or off-black stockings/panty hose/knee highs.

CHECK-OUT / CHECK-IN PROCEDURES

- 1. The dresses will be checked-out to each student before each performance at a specific time designated by the band director. **Be on time!**
- 2. Students who arrive without other necessary uniform parts (i.e. shoes or black stockings) may borrow from the uniform closet. Borrowers will be reported to the band director and points will be deducted from their daily grade. Borrowed items must be returned directly following each performance. Note: Availability of spare items is not guaranteed. Those unable to borrow may not be able to participate.
- 3. The dresses will be checked-in immediately after each performance upon return to the band hall OR at a designated time set by the band director/uniform chairman. Only properly hung dresses will be accepted at check-in.
- 4. Students who fail to follow the appropriate check-out / check-in procedures will be dealt with by the band director.

CLEANING

- 1. The dresses will be professionally dry-cleaned through out the year as determined by the band director and uniform chairman.
- 2. Each student is required to pay a "uniform cleaning fee" on "Money Day" at the beginning of each year to cover this cost.
- 3. Under NO circumstances should a student ever take one's dress to the cleaners.

8.4 Concert Attire

Guidelines for Female Students

(continued)

DONNING THE CONCERT DRESS

- 1. Always wear and treat your dress with pride.
- 2. The following checklist should be used when preparing for a performance:
 - garment bag, if necessary
 - black hose/stockings/knee highs
 - black, formal, closed-toe shoes
 - black formal concert dress on hanger
- 3. Hair may be worn up or down. Students can use hair-colored pins, clips, rubber bands, etc... but no ribbons unless they are black. Natural hair colors will be the only style of color accepted.
- 4. No jewelry including watches, earrings, necklaces, etc... is allowed with the exception of post earrings (studs).
- 5. Clear fingernail polish is allowed.
- 6. No make-up except for **waterproof** mascara is allowed.